



2026 Project Guide

Friends of the Cumbres & Toltec Scenic Railroad

Work Session Dates

Work Session A	May 18 - 22, 2026	Antonito, CO
Work Session B	May 25 - 29, 2026	Antonito, CO
Work Session C	June 15 - 19, 2026	Chama, NM & Antonito, CO
Work Session D	June 22 - 26, 2026	Chama, NM & Antonito, CO
Work Session E	July 27 - 31, 2026	Chama, NM* & Antonito, CO
Work Session F	August 3 - 7, 2026	Chama, NM* & Antonito, CO
Work Session G	September 21 - 25, 2026	Antonito, CO
Colorado Springs	1st , 3rd, & 5th Saturdays	Colorado Springs, CO

*Limited Support in Chama, NM, for Sessions E & F. No volunteer lunches provided.

Project List

Antonito, Colorado

- Food Preparation
- Tool & Bolt Operation
- Landscape
- Caboose Annual Maintenance
- Project Photography & Videography
- Restore GRAMPS Tank Car 11056
- Restore Motor Car MW02
- Addition of a Covered Structure at the CRE
- Restore Telegraphphone Booths
- Rebuild Boxcar 3263 for Stencil Storage
- Repair, Repaint, & Letter RPO 54
- Install Trucks & Underbody Hardware on Boxcar 3223
- Install Electrical Power at the Car Storage Facility
- Dismantle Boxcar 3150 for Parts

Chama, New Mexico

- Food Preparation
- Manage Tool Car
- Manage Bolt Car
- Landscape
- Paint Historic Rolling Stock
- Quick Fix Team
- Letter Historic Rolling Stock
- Project Photography & Videography
- Cosmetic Restoration of Locomotive 483
- Construct Friends' Storage Building
- Reconstruct High Side Gondola 1000
- Rebuild Stock Car 5600
- Maintain & Repair the Chama Log Bunkhouse
- Configure Boxcar 3566 as the Hollywood Movie Boxcar
- Apply Fire Retardant to the Log Bunkhouse
- Replace the Roof on the Night Watchman's House
- Chama Sign Garden
- Repair Boxcar 3570
- Repair Boxcar 3484
- Repair Boxcar 04426
- Inspect & Repair the Oil Rack Walkway

Along the Line

Cumbres

- Reconstruct the Car Inspector's House
- Construct Walking Trails at Cumbres

Sublette

- Restore Sublette Section House

Lava

- Excavate Lava Pumphouse Slope & Barrier

Osier

- Repair the Exterior of the Osier Depot

Right-of-Way

- Remove Vegetation
- Wood-Preservative Treatment
- Maintain Railroad Signage

Docents

Colorado Springs

- Restore Baggage Express 163

Remote

- Media Volunteers
- Education Program



About Work Sessions

Work Sessions begin on Monday mornings and end on Friday afternoons. Volunteers sign up to work on one project during the session. During most of our week-long Work Sessions, volunteers can sign up to get a lunch provided by the Friends. The cost of lunch is \$10 per volunteer per day. Lunch availability varies by session and location.



No experience is required to volunteer with the Friends. While most projects are open to beginners, some may require specialized skills, and volunteers may be limited to members with those skills.



Projects are available on a first come, first served basis. Registering early will help you secure your first-choice projects.

If a Team Leader is unavailable, a project may be cancelled. If your project is cancelled, you will be contacted as soon as possible to be assigned to an alternative project.

All volunteers must have an active Friends' membership. Join or renew your membership [here](#).

Types of Projects



Restoration Projects

Restoration projects are projects that restore, rebuild, or preserve a piece of historic equipment or a structure. These projects may include lineside structures, signs, or rolling stock. Rolling stock includes historic freight cars and maintenance-of-way equipment.

Restoration projects focus on returning an artifact to the state of a particular era. The era to which an item is restored depends on how it will be used and its position on the line. For example, structures in Cumbres, Colorado, are restored to their 1930 appearance.

Restorations also make every effort to be as close to historically accurate as possible. That often means using custom hardware, custom-cut lumber, and other specialized materials.



Maintenance Projects

Maintenance projects involve maintaining or repairing equipment that has been restored and is in working order. This includes painting, lettering, equipment repair, and performing minor repairs or maintenance to keep rolling stock or structures in good order.



Support Projects

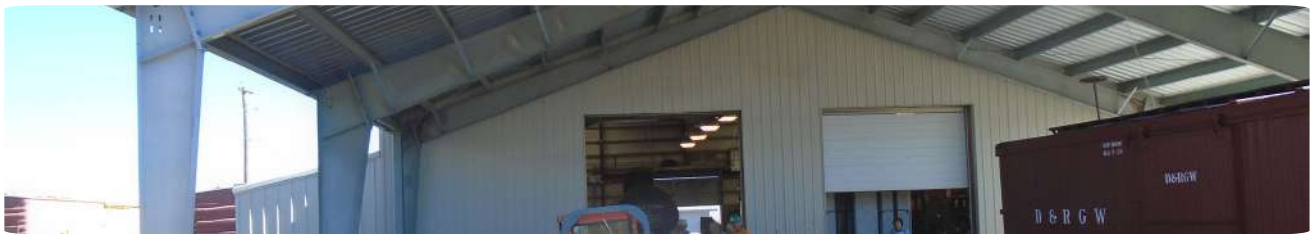
Support projects are tasks that support volunteers who are working on restoration, maintenance, and other on-site projects. Support includes managing the tools and bolts, working in the wood shop, preparing food, and taking photos and videos.



Interpretation Projects

The mission of interpretation projects is to enhance the learning and enjoyment of the railroad. Some interpretation projects focus on guests at the Cumbres & Toltec Scenic Railroad through interpretive signage and exhibits. The Friends also provides interpretive materials for guests, including Trip Maps, Walking Tour Brochures, and the Junior Engineer Guide.

Remote interpretive projects include the Virtual Education Program and media volunteers who contribute articles, photos, videos, and time to the *C&TS Dispatch* (our quarterly magazine), *Dispatch Extra* (our monthly e-newsletter), and social media.



Facilities

Facilities projects support the maintenance, upkeep, and day-to-day operations of Friends' facilities, such as the Car Restoration Facility and storage buildings.

Antonito, Colorado

Ed Lowrance Car Restoration Facility
109 Monte Vista Avenue, Antonito, CO 81120

At the Corner of Narrow Gauge St

Food Preparation

Project # 231

Is hospitality your thing? Being part of the Antonito Food Preparation Team is a fun way to be part of the Friends' community and feed hungry volunteers.

Food preparation consists of preparing and serving lunch to volunteers. Lunches may include crockpot meals, sandwiches, soups, and more. This team also makes coffee and stocks snacks and drinks.



Sessions Available: A, B, C, D, E, F, & G
Project Type: Support

Tool & Bolt Operation

Project # 245



Sessions Available: A, B, C, D, E, F, & G
Project Type: Support

Tool and bolt volunteers are responsible for maintaining stock inventories in the Ed Lowrance Car Restoration Facility. They assist teams with fasteners, including nuts, bolts, nails, and screws needed for projects.

They also maintain power and hand tools, keeping them in safe, serviceable condition.

The team also coordinates stock with the Chama Tool and Bolt Cars.

Landscape

Project # 701



**Sessions Available: A, B,
C, D, E, F, & G
Project Type: Support**

Volunteers who love gardening or being outdoors are perfect for this landscaping project. Work may include weeding, weed-whacking, and planting flowers.

Landscaping in Antonito is essential support that not only beautifies the area around the Car Restoration Facility but also reduces fire risk from tall, dry weeds and bushes around the historic rolling stock and the facility.

Caboose Annual Maintenance

Project # 741

Each year, the historic cabooses on the Cumbres & Toltec Scenic Railroad need maintenance. The maintenance includes checking the canvas roofs for leaks. If a leak is found, volunteers apply “black roof emulsion” preservative to the canvas roofs. Of the four cabooses we maintain, 0503 and 0579 have canvas roofs. 0306 has a Murphy Roof, and 05635 has a metal roof.



**Sessions Available: A & B
Project Type: Maintenance**

Project Photography & Videography

Project #763

Photographer and videographer volunteers may be hobbyist photographers or even professionals. We ask that you have a basic understanding of taking pictures and/or videos. You can use your own digital camera or a high-quality phone camera.

Photography and videography play an important role in documenting our work and the restoration process. Photos and videos are uploaded to a workplace collaboration site. Training is provided for uploading and captioning media.



**Sessions Available: A, B,
C, D, E, F, & G**
Project Type: Support

Restore GRAMPS Tank Car 11056

Project # 1332



Sessions Available: D, E, F, & G
Project Type: Restoration

Originally a standard gauge frameless, single-dome tank car, 11056 was converted to run on narrow gauge tracks. It was one of 15-16 cars leased to Lafayette Hughes and painted with the unique GRAMPS logo on the car.

Work to be completed includes installing new trucks, working on brake gear, and installing new running boards. Once the restoration work is complete, Tank Car 11056 will be ready for a fresh coat of paint and lettering.

Restore Motor Car MW-02

Project #1354



Motor Car MW-02 is a unique Inspection Car purchased from the D&RGW in 1970 as part of the sale of the Cumbres & Toltec Scenic Railroad. The team began work in 2020 and has made significant progress.

A metal roof has been installed. The team has completed the interior work. Assembly of the front-end will be the next step.

Sessions Available: A, F, & G
Project Type: Restoration

Addition of a Covered Structure at the Car Restoration Facility

Project # 1360

The structure for the covered addition has been completed on the west end of the Ed Lowrance Car Restoration Facility. Although the track work is complete, the team will replace the center concrete section and pour a new slab in this area. Replacing the concrete will improve drainage.

This support project will provide space for additional covered restoration work.



Sessions Available: E & F
Project Type: Facilities

Restore Telegraphphone Booths

Project #1369

Telegraphones used voice over telegraph wires to communicate important information on the D&RG. Telgraphones were found in booths along the line.

There are several styles of telegraphone booths on the Cumbres & Toltec Scenic Railroad, and all but one of them have been repaired. The last booth will be completed this year.



Sessions Available: D
Project Type: Restoration

Rebuild Boxcar 3263 for Stencil Storage

Project # 1389



Sessions Available: C & D
Project Type: Restoration

D&RGW Boxcar 3263 is being restored to store the Friends' massive collection of stencils. From the outside, the boxcar will look like a historic boxcar. The inside will be filled with shelving to store stencils, including logo stencils, letters, and numbers.

The restoration has included replacing the siding, repairing sills, and much more. Join the team to help us build a safe and dry stencil storage car.

Repair, Repaint, & Letter RPO 54

Project # 1390



RPO 54, built in 1880, was restored by the Friends of the Cumbres & Toltec in the early 2000s. Since then it has been used in Hollywood films and spent a lot of time in the elements. Repairs to the clerestory windows are needed. In addition to repairs, RPO 54 needs a fresh coat of paint.

Restored to its 1924 configuration, this car is one of a kind on the C&TS and needs your help!

**Sessions Available: A, B, C,
D, E, F, & G**
Project Type: Maintenance

Install Trucks & Underbody Hardware on

Boxcar 3223

Project # 1392

When railcars were scrapped, the underbody hardware and trucks were often removed and sold to the scrapper. The wooden car bodies were then sold to farmers or other interested parties and used as storage sheds.

Boxcar 3223 was donated to the Friends of the Cumbres & Toltec Scenic Railroad and needs new trucks, couplers, and underbody hardware installed.



Sessions Available: C & F
Project Type: Restoration

Install Electrical Power at the Car Storage Facility

Project # 1413

The Friends are in need of additional electrical power in the Antonito Car Storage Facility. 120v power will be added to the northwest corner of the facility.

The Car Storage Facility is the covered area adjacent to the Ed Lowrance Car Restoration Facility. The facility houses several cars and is sometimes used as a covered workspace for Friends' projects.



Sessions Available: C
Project Type: Maintenance

Dismantle Boxcar 3150 for Parts

Project # 1433



Sessions Available: A
Project Type: Restoration

Boxcar 3150 was acquired by the Friends as a source of much needed parts. The car is in poor condition, and most of the wood is damaged beyond repair. It is not part of the documented historic assets list.

A team of volunteers will deconstruct the car in Antonito, saving all the usable parts for later. The parts, wood or metal, will be cataloged and stored. Usable parts may include couplers, running gear, door hardware, grab irons, and more.

Chama, New Mexico

Cumbres & Toltec Scenic Railroad
500 Terrace Avenue, Chama, NM 87520

Food Preparation

Project # 230

Do you love feeding people? Our food preparation team in Chama may be the project for you! This task does not involve any cooking, unless making coffee counts. In Chama, food-preparation volunteers serve prepackaged sandwiches, snacks, and drinks to volunteers.

They also clean up after lunch and prepare for the next day. Its a great way to support our preservation volunteers!



Sessions Available: C & D
Project Type: Support

Manage Tool Car

Project # 240



**Sessions Available: C, D,
E, & F**
Project Type: Support

Tool car volunteers are responsible for maintaining the tool log in Chama. That includes issuing tools to volunteers and checking them back in after use. They also monitor the safety and use of power tools.

In addition to this, they are responsible for maintaining tools and issuing safety equipment as needed.

Manage Bolt Car

Project # 241



The Bolt Car in Chama helps teams procure all types of fasteners. They also cut and thread bolts and tie rods.

The team works with the Antonito Tool & Bolt Operations to ensure that the Chama Bolt Car is stocked with needed supplies.

**Sessions Available: C, D,
E, & F**
Project Type: Support

Landscape

Project # 700

If you love gardening and native plants, landscaping in Chama is the project for you. The gardens in Chama have a variety of native plants.

Volunteers here may find themselves weeding, trimming low hanging branches over walkways, or mowing around historic cars and structures. These tasks not only beautify the area but also help reduce the risk of fires near historic equipment.



**Sessions Available: C, D,
E, & F**
Project Type: Support

Paint Historic Rolling Stock

Project # 720

Painting historic rolling stock is an integral part of restoring and maintaining the fleet of cars and equipment on the Cumbres & Toltec Scenic Railroad. Paint helps protect equipment from damage caused by the sun, wind, and precipitation.

The paint crew is responsible for preparing cars for painting through scraping and sanding. The team then primes the surface before painting the color on the cars.



Sessions Available: C & D
Project Type: Maintenance

Quick Fix Team

Project # 726



**Sessions Available: C, D, E
& F**
Project Type: Maintenance

The Quick Fix Team works on short projects that can be completed in a few hours or a few days. This team can expect to work on several projects during the week.

Projects may include repairing siding on boxcars or replacing damaged decking on gondolas or flat cars. You never know what work you will find on the Quick Fix Team.

Letter Historic Rolling Stock

Project # 730



Sessions Available: C & D
Project Type: Maintenance

Do you love detail work? If you do, lettering might be the job for you! The lettering teams come in after the paint crew has completed their work and paint all lettering and logos on the historic rolling stock.

The Friends have a collection of stencils they use to paint unique letters on each car. Even if you have not done something like this before, our team leaders are ready to teach you how.

Project Photography & Videography

Project #762

We need photographers and videographers to join our team. You don't need to be a professional and can use your own digital camera or a high-quality phone camera.

Photography and videography are essential for documenting our work and the restoration process. Photos and videos are uploaded to a workplace collaboration site. Training is provided for uploading and captioning media. With this job, you may find yourself traveling to other worksites, such as Cumbres or Lava.



**Sessions Available: C, D,
E & F**
Project Type: Support

Cosmetic Restoration of Locomotive 483

Project # 1186

Locomotive 483, a K-36 class Mikado, was the first locomotive to run on the Cumbres & Toltec Scenic Railroad in 1970. She was built in 1925 and retired from service in 1977.

Volunteers are restoring the locomotive for display, allowing guests at the Cumbres & Toltec Scenic Railroad to get up close to an authentic steam locomotive.



Sessions Available: C

Project Type: Restoration

Construct Friends' Storage Building

Project # 1286



The Friends have built a storage building in Chama. This structure is not in the Chama yard. The storage building will give us a place to store materials, tools, and paint.

Volunteers are working to complete the paint storage room, which will allow us to store paint in Chama, in a climate-controlled location, rather than transporting paint back and forth from the Ed Lowrance Car Restoration Facility in Antonito.

Sessions Available: A & B

Project Type: Facilities

Reconstruct High Side Gondola 1000

Project # 1312



Sessions Available: C & D
Project Type: Restoration

Built in 1902, High Side Gondola 1000 is a historic asset to the railroad. When the team began the project in 2018, Gondola 1000 was falling apart. The entire car had to be reconstructed with new wood. Much of the metal hardware was reused.

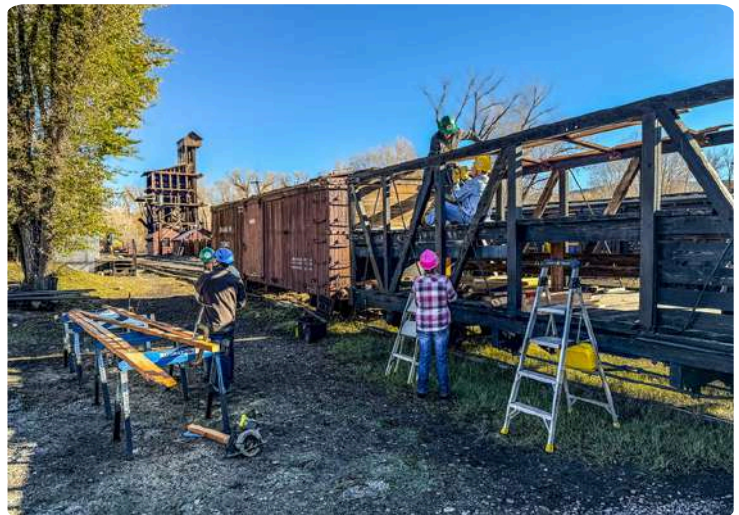
In 2026, volunteers will be working on the brake system. Work will include repairing brake line leaks, adjusting brake levers, and testing the brake system. When the work is complete, the car will be turned over to the Railroad.

Rebuild Stock Car 5600

Project # 1379

Due to age-related deterioration and normal wear and tear, stock car 5600 required a complete rebuild. The car was built in 1904, and the rebuild began in 2022.

The most recent work completed was in October 2025, when the team installed roof stringers and side support pieces. The car was covered to protect it from winter's wrath and will be ready to go in 2026.



Sessions Available: C
Project Type: Restoration

Maintain & Repair the Chama Log

Bunkhouse

Project # 1407

The Chama Log Bunkhouse was built in the 1880s and was previously stabilized, but now needs repairs.

The team will be repairing windows, casings, and sill plates. This includes scraping paint and repairing deteriorated areas. The structure will be assessed, and where mortar has broken away from the joints, the chinking will need to be repaired.



Sessions Available: C & D

Project Type: Maintenance

Configure Boxcar 3566 as the Hollywood

Movie Boxcar

Project # 1411



The restoration of Boxcar 3566 was completed in 2025, but the car's interior now needs to be configured for the Hollywood Movie Boxcar. This will include finishing the electrical wiring, installing the lighting system, and installing interpretive signs.

When complete, Boxcar 3566 will be a museum featuring exhibits about filming movies on the railroad.

Sessions Available: D

Project Type: Interpretation

Apply Fire Retardant to the Log Bunkhouse

Project # 1425



A portable pump tank is used to apply FS2 Fire Retardant. It will be sprayed on the cedar shake shingles to prevent fire from spreading in the event of a fire. Covering all parts of each shingle is important to ensure fire protection.

Fire retardant should be applied every 5-7 years.

Sessions Available: C
Project Type: Maintenance

Replace the Roof on the Night Watchman's House

Project # 1426

The Night Watchman's House in Chama is a converted refrigerator car body used as the Night Watchman's residence. Over the years, it has also housed volunteers.

The new roof will be Owens Corning DeckSeal, which is a self-adhered 2-ply roofing material. The initial layer is a base layer, finished with a top layer that can be exposed to the elements. The new roof is expected to last 10-years.



Sessions Available: C
Project Type: Maintenance

Chama Sign Garden

Project # 1427

The Chama Sign Garden is an exhibit below the stairs leading from Terrace Avenue into the Cumbres & Toltec Scenic Railroad yard in Chama, New Mexico. The exhibit highlights the signs and sounds you may hear on the railroad.

It features replica signs and the whistle signals you may hear as the train approaches them. Volunteers will be installing the final exhibits in 2026.



Sessions Available: D
Project Type: Interpretation

Repair Boxcar 3570

Project # 1428

D&RGW Boxcar 3570 needs repairs. Volunteers will replace damaged and rotten siding and fascia boards. Once siding work is complete, the team will rehang doors and replace roofwalk boards.

Volunteers will also remove a metal patch and make repairs needed in the patched area.



Sessions Available: C & D
Project Type: Maintenance

Repair Boxcar 3484

Project # 1429



Sessions Available: C & D
Project Type: Maintenance

Repairs to D&RGW Boxcar include replacing damaged siding and fascia boards on both sides of the car.

The roof walk may need repairs, but it will need to be assessed.

After repairs are completed, the team will inspect the safety devices such as grab irons, mounted brackets, and the brake system. If any of the hardware is loose, it will be tightened and repaired.

Repair Boxcar 04426

Project # 1430

D&RGW Boxcar 04426 needs repairs before being painted. The repairs include replacing damaged and rotten siding, then replacing fascia.

The doors will be rehung and then the roof walk inspected and repaired as needed.



Sessions Available: C & D
Project Type: Maintenance

Inspect & Repair the Oil Rack Walkway

Project # 1431

The Oil Rack in Chama was used for loading oil from GRAMPS oil into tank cars. The oil was then transported to Alamosa until the Oriental Refinery fire in 1964.

The oil racks have been restored, but the walkway needs to be repaired. Join the team to repair this unique structure.



Sessions Available: C

Project Type: Maintenance

Projects Along the Line

Cumbres, Colorado

Reconstruct the Car Inspector's House

Project # 1005

Built in 1911 to house a full-time car inspector and his family, the Car Inspector's house needed more than just restoration. The structure has been reconstructed by the Friends.

The structure is almost complete, and the main focus in 2026 is finishing the interior. That includes finishing the installation of flooring and wall panelling. Work will also be done around the structure to improve drainage. The roof will be checked and repairs will be made as needed.



Sessions Available: C, D, E & F
Project Type: Restoration

Construct Walking Trails at Cumbres

Project # 1365



Sessions Available: C & D
Project Type: Support

Cumbres, Colorado, is the only former Denver & Rio Grande Section Town that is easily accessible by road. The history, combined with the scenic beauty of the San Juans, makes it a wonderful place to get out of the car and explore.

The Friends have partnered with troops from Scouting America to build a trail system at Cumbres to guide guests through the former section town. If your troop or other organization would like to partner with us to help complete this project, please reach out.

Projects Along the Line

Sublette, New Mexico

Restore Sublette Section House

Project # 1345

The Sublette Section House is one of three section houses on the Cumbres & Toltec Scenic Railroad. For several years, volunteers have made repairs to the structure. Repairs have included roof work, structural work, and more.

In 2026, work continues on the porches and the exterior of the structure. This will include repairing portions of all three of the section house porches.



Sessions Available: C, D, E, & F
Project Type: Restoration

Lava, New Mexico

Excavate Lava Pumphouse Slope & Barrier

Project # 1331



The Lava pumphouse is not located directly on the railroad but is a historic asset. Located on the Rio de Los Piños, the rock structure once pumped water to the Lava tank.

The parking area barrier and slope at the pumphouse need to be excavated for safety.

Sessions Available: E & F
Project Type: Maintenance

Projects Along the Line

Osier, Colorado

Repair the Exterior of the Osier Depot

Project # 1408



The Osier, Colorado, depot, built in 1880, now houses a museum featuring exhibits that show what a historic depot would have looked like.

The historic structure requires exterior repairs. Repairs will help keep wildlife out and protect the exhibits from weather-related damage. They will enhance the guest experience at the Osier lunch stop.

Sessions Available: C & D
Project Type: Maintenance

Right-of-Way

Remove Vegetation

Project # 710

Volunteers work annually to remove vegetation along the right-of-way. This includes trimming limbs or removing trees that have grown too close to the tracks. This project not only helps keep trains and passengers safe, but it also helps reduce fire danger by removing dry vegetation from the areas around the tracks.



Sessions Available: D
Project Type: Maintenance

Projects Along the Line

Right-of-Way

Wood-Preservative Treatment

Project # 740

Many areas along the railroad require wood preservative treatment to help protect exposed wood. This team works both along the railroad's right-of-way and in the railyards to ensure that exposed wood is protected. They can often be seen spraying a protective coating over wooden structures.



Sessions Available: D
Project Type: Maintenance

Maintain Railroad Signage

Project # 750



Sessions Available: C & G
Project Type: Maintenance

Twice a year, volunteers get together to repair, maintain, and replicate signs along the railroad. The signs they work on include mileposts, yard limit signs, whistle posts, and so much more.

Their work includes shaping wooden posts to replicate mileposts, painting signs, treating wood posts to prepare them to be placed in the ground, and installing signs along the right-of-way.

Docents

Project # 400



If you love riding the train, sharing history, geology, botany, and railroad lore with people, being a docent is the volunteer job for you.

Docents ride every train possible on the Cumbres & Toltec Scenic Railroad. They walk the train, sharing information with guests in the cars and in the open-air gondola.

In addition to interacting with passengers, docents facilitate the Junior Engineer Program by certifying new Junior Engineers and presenting them with their patches.



Docents can also give tours of the railyards. This is a fun way to share how the railroad operated by showcasing freight cars, the oil dock, the coal tipple, and other aspects of railroad life.

Docent training is provided.

For more information, visit [click here](#) or email docent@fctsr.org.



May - October
Project Type: Interpretation

Colorado Springs, Colorado

Pikes Peak Trolley Museum & Restoration Shop
2333 Steel Dr, Colorado Springs, CO 80907

Restore Baggage Express 163

Project # 1373

1st, 3rd, 5th Saturdays year-round
Project Type: Restoration



Baggage Express 163 was built in 1883 and operated on the D&RGW until being retired in 1951. After being retired, the car was scrapped. The trucks and metal underneath the car were removed, and the wooden shell was sold. After sitting exposed to the elements for many years, the Friends acquired it.

Restoration began in 2022 with the removal of rotten wood and rusty metal. Since then, sills have been replaced, and work has moved to the roof and clerestory in late 2025.

Ongoing work includes continuing the roof installation, repairs to the siding and interior, and more.



Remote Projects

Media Volunteers

Project # 1394



Year-Round
Project Type: Interpretation

The Friends' media team needs your help. You can assist us in promoting the Friends by sharing your photos and video clips, sharing information about your experiences with the Friends and the railroad, or even helping us write stories and articles about railroad history.

Your contributions could be featured in the *C&TS Dispatch*, *Dispatch Extra*, or on Facebook, Instagram, or YouTube.

We can't wait to work with you.

Contact kswalser@fctsr.org for more information.

Education Program

Project # 1395

As the Friends of the Cumbres & Toltec preserve history, we also strive to educate the public. Volunteers with the education program are needed to help create materials for the Virtual Education Program.

You can help by assisting with research, formatting units in MS PowerPoint, creating activity sheets, artwork, digital designs, or videos.

New units are in the works, and we need your help to complete them. View educational materials [here](#) or contact education@fctsr.org for more information.



Year-Round
Project Type: Interpretation